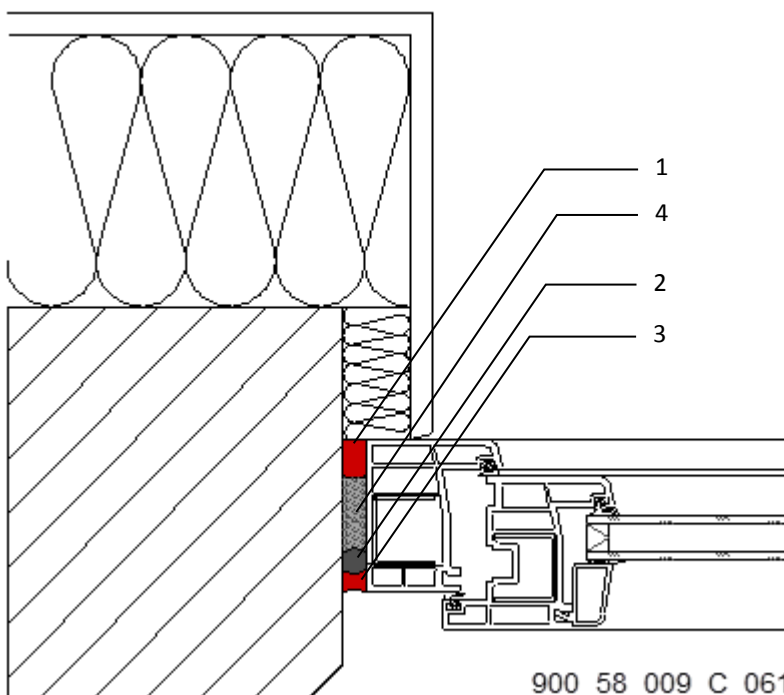


# TECHNICAL DRAWING

## Window Installation with SikaHyflex® and Sika® ExpansionTape



1. **Sika® ExpansionTape-600**  
(Type depends on joint width)
2. Backer rod
3. Joint sealing inside with **SikaHyflex®-220 Window** or **Sikaflex® AT Connection**
4. **Sika Boom®** as insulation

900\_58\_009\_C\_0612

The information contained herein and any other advice are given in good faith based on Sika's current knowledge and experience of the products when properly stored, handled and applied under normal conditions in accordance with Sika's recommendations. The information only applies to the application(s) and product(s) expressly referred to herein and is based on laboratory tests which do not replace practical tests. In case of changes in the parameters of the application, such as changes in substrates etc., or in case of a different application, consult Sika's Technical Service prior to using Sika products. The information contained herein does not relieve the user of the products from testing them for the intended application and purpose. All orders are accepted subject to our current terms of sale and delivery. Users must always refer to the most recent issue of the local Product Data Sheet for the product concerned, copies of which will be supplied on request.

**Sika Services AG**  
TM Sealing & Bonding  
Speckstrasse 22  
8303 Pfäffikon  
Switzerland

**Version given by**  
René Ganz  
Phone: --  
Fax: --  
Mail: ganz.rene@ch.sika.com

Technical Drawing  
Window Installation with SikaHyflex® and Sika®  
ExpansionTape  
11.2013, VERSION 01  
N° 900\_58\_009\_C\_0612

Corporate template