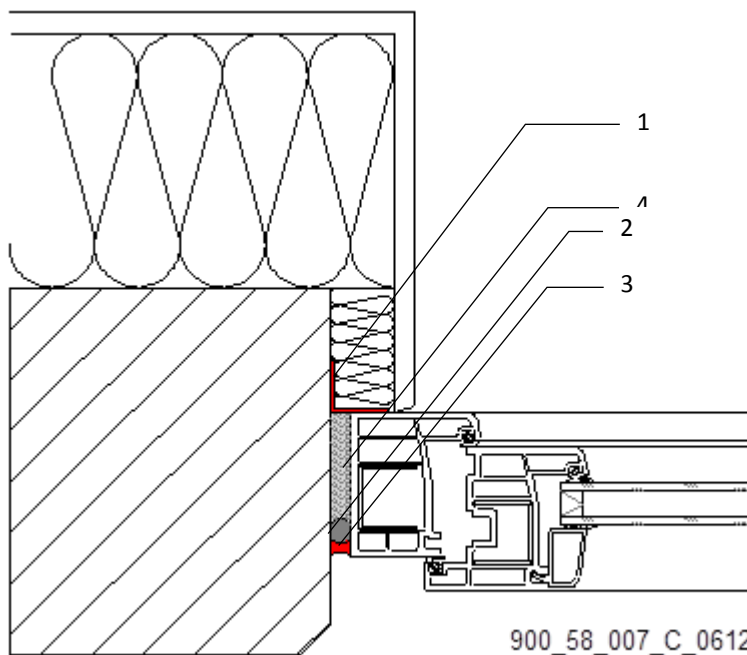


TECHNICAL DRAWING

Window installation with SikaMembran® Window outside



1. **SikaMembran® Window outside** bonded with **SikaHyflex®-220 Window** or **Sikaflex® AT Connection** to the wall
2. Backer rod
3. Joint sealing with **SikaHyflex®-220 Window** or **Sikaflex® AT Connection**
4. **Sika Boom®** as insulation

The information contained herein and any other advice are given in good faith based on Sika's current knowledge and experience of the products when properly stored, handled and applied under normal conditions in accordance with Sika's recommendations. The information only applies to the application(s) and product(s) expressly referred to herein and is based on laboratory tests which do not replace practical tests. In case of changes in the parameters of the application, such as changes in substrates etc., or in case of a different application, consult Sika's Technical Service prior to using Sika products. The information contained herein does not relieve the user of the products from testing them for the intended application and purpose. All orders are accepted subject to our current terms of sale and delivery. Users must always refer to the most recent issue of the local Product Data Sheet for the product concerned, copies of which will be supplied on request.

Sika Services AG
TM Sealing & Bonding
Speckstrasse 22
8303 Pfäffikon
Switzerland

Version given by
René Ganz
Phone: --
Fax: --
Mail: ganz.rene@ch.sika.com

Technical Drawing
Window installation with SikaMembran® Window
outside
11.2013, VERSION 01
N° 900_58_007_C_0612

Corporate template